

**PROTECT
YOUR
ASSETS**

Farmproof

Enhanced long term
substrate protection for
agricultural and horticultural
environments



FARMING



ORCHARDS & VINEYARDS



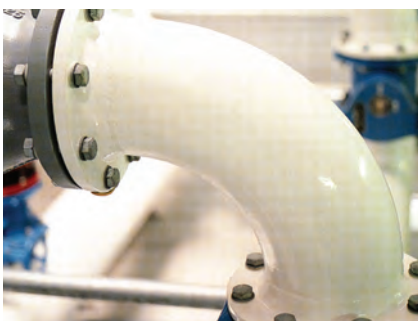
Superior Corrosion Protection

Kulorthene™ is unlike normal protective paint or powder coating. It is a maintenance free coating manufactured from unique polymers which form a chemical bond to metal. Kulorthene is an impervious barrier against a wide variety of corrosive substances including animal effluent, fertiliser, acids and alkalis.

Kulorthene is a solvent free, highly flexible thermoplastic coating which provides long term corrosion protection to metal. Applied in a one coat process between 300-500um Kulorthene acts as a barrier between the metal and harsh environments and can easily replace 3 or 4 layers of liquid paint.

Eco sensitive Kulorthene does not contain any heavy metals such as zinc, lead or cadmium. Kulorthene is safe to use in the water and food industry with approvals to ASNZS 4020:2003 - Potable/Drinking Water and the FDA.

Kulorthene is ideal for use in Aquaculture Installations, Farms and Vineyards throughout New Zealand. Independent testing to ISO20340 and ISO12944-6 - Pass category C5m Marine / Off shore and Im3 Underground proves that Kulorthene provides corrosion protection in the toughest of environments.



HORTICULTURE / AQUACULTURE



Superior Corrosion Protection - How it works

Kulorthene achieves its superior corrosion protection by acting as an impervious barrier against water and oxygen, halting their migration to the substrate thus preventing the onset of corrosion. Moisture creep from cut edges or severe coating damage, which can also cause corrosion, is negated by Kulorthene's excellent adhesion to the substrate. Kulorthene also has excellent UV stability ensuring long term weathering properties.

Kulorthene protects structures and equipment from corrosion



Tough environments

Kulorthene protects structures and equipment from corrosion in different types of environments (rural, urban, coastal, severe marine) and in all kinds of seasonal weather.



Animal effluent

Protect steel components in milking sheds from ammonia and the corrosive constituents in slurry like urea, uric acid, ammonia and ammonium salts and naturally excreted chloride.



Fertilisers

Protect agricultural structures from extremely corrosive lime, potassium, phosphate and nitrates. Ideal for eco-trellis used in vineyards and orchards.



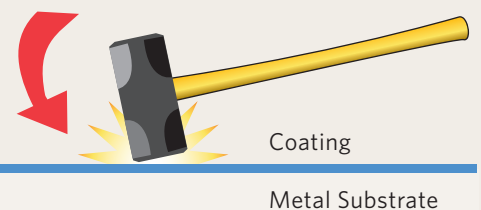
Chemicals

Protection from herbicides and chemicals used for pest, disease and weed control and acid solutions for cleaning dairy equipment.

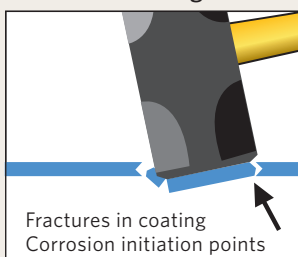
Kulorthene is flexible

The abrasion and impact resistance of Kulorthene allows the coating to withstand the rigours of agriculture without compromising the surface integrity. Kulorthene will not crack, or chip, ensuring superior protection from corrosion.

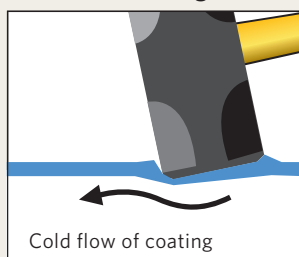
Impact Resistance: Performance after damage



Conventional Thermoset Coating



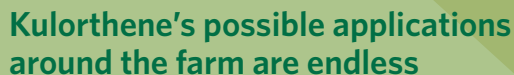
Kulorthene Coating



Kulorthene coated pipe is scuffed but the film is not broken or chipped.



PROTECT YOUR ASSETS



- | | | | | |
|----------------------------|-------------------------|---------------------------|---------------------------|---------------------------------|
| A Cattle Sheds | D Horticulture | G Equipment Sheds | J Milking Parlours | M Vineyard Posts/Trellis |
| B Coastal Machinery | E Farm Machinery | H Fertiliser Bays | K Piggeries | N Farm Perimeter Fences |
| C Aquaculture | F Irrigation | I Effluent Storage | L Water Supply | |

Dulux Powder & Industrial Coatings
31 B Hillside Road, Glenfield, Auckland, New Zealand,
PO Box 10 1886, North Shore Mail Centre,
Phone: 09 441 8244
Toll free: 0800 800 975
Fax: 09 441 8242
www.duluxpowdercoatings.co.nz

AUSTRALIA
Dulux Powder & Industrial Coatings
(1st floor) 1-15 Pound Road,
Dandenong South,
VIC 3175
Customer Service:
Ph: 13 24 99
Fax: 1800 804 649
www.duluxpowders.com.au

DGL International
Blk 265, Serangoon Central Drive #02-275,
Singapore 55 02 65
Ph +65 9833 7803

Dulux is registered trade mark and Lorolthene and the Kulorlthene device are trade marks of DuluxGroup (Australia) PTY Ltd. Any advice, recommendation, information, assistance or service provided by DuluxGroup (Australia) Pty Ltd or its related bodies corporate (hereinafter collectively referred to as "DuluxGroup") in relation to goods manufactured by it or their use and application is given in good faith and is believed by DuluxGroup to be appropriate and reliable. However, any advice, recommendation, information, assistance or service provided by DuluxGroup is provided without liability or responsibility PROVIDED THAT the foregoing shall not exclude, limit, restrict or modify the rights, entitlements and remedies conferred upon any reason, or liabilities imposed by any DuluxGroup condition or warranty imposed by a Commonwealth, State or Territory Act or ordinance rendering void or prohibiting such exclusion, limitation, restriction or modification. The images shown in this brochure are examples of where DuluxGroup Powder Coatings can and have been used. The information in this brochure is correct at the time of print. (C) Copyright 2012 DuluxGroup. DGL International is a division of DuluxGroup (Australia) Pty Ltd (ABN 67 000 049 427). DuluxGroup owns the Dulux trade mark in Australia, New Zealand, PNG and Fiji. It is not associated with and has no connection to the owners of the Dulux trade mark in other countries, nor does it sell Dulux products in other countries.

